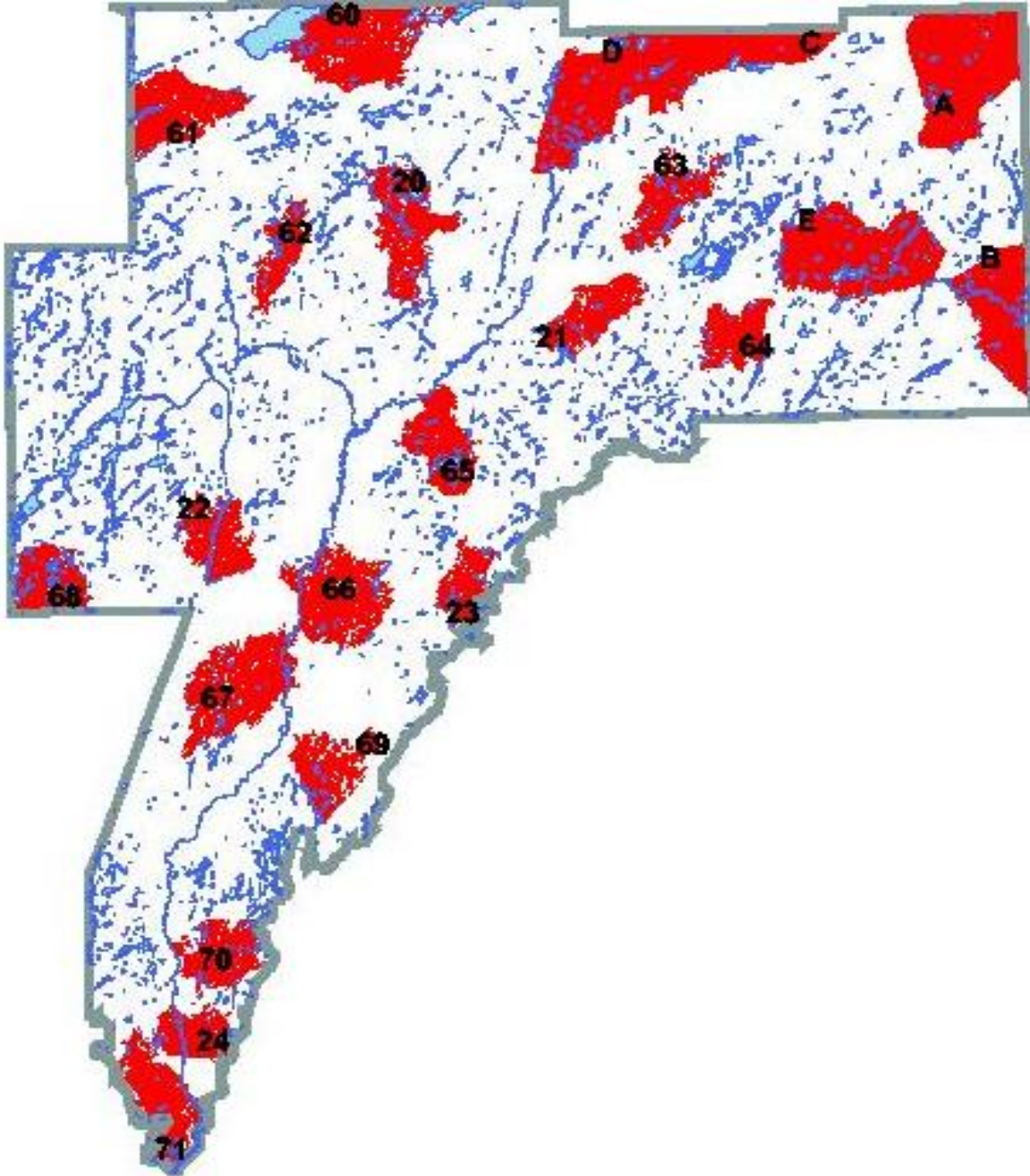


BIG PIC FOREST

SUMMARY OF CORE AND PROTECTED AREAS

Marten Cores

Information on Marten Core is from the Analysis Package of the Big Pic phase I FMP. The following is an illustration of the location of marten core area deferrals for the 2007-2027 period of the 2007 FMP.



The following table presents by Marten Core deferral, the deferral timeframe in years and the area by forest unit.

Marten core area deferrals from the 2007-2027 period of the 2007 FMP by period (yrs) & forest unit.

Core	Period	Total Area	BW1	LC1	MW1	MW2	PJ1	PJ2	PO1	SB1	SF1	SP1
20	20	5,972		43	9	350		18	799	3,552	352	850
21	20	4,230	54	25	57	107	250	184	540	1,103	890	1,021
22	20	4,140	513	30	110	1,455	209	27	460	508	277	551
23	20	1,685	47	31		448			71	160	131	796
24	20	2,561	256		49	972			137	78	629	440
61	60	6,073		650	37	735	397	39	362	2,349	386	1,120
62	60	2,950			112	547	87	103	105	413	411	1,172
64	60	3,711		683	25	883		256	278	829	136	621
65	60	4,648	70	150	61	1,903	125	223	105	736	780	496
66	60	7,177	53	36	165	1,915	66	391	578	646	639	2,688
67	60	8,101		29	320	1,629	11	185	1,262	1,092	745	2,828
68	60	585	42			155				59	270	59
69	60	4,034		33	38	1,094		11		836	467	1,556
70	60	3,203	357	3		2,339				23	58	423
Total		59,070	1,392	1,713	983	14,532	1,145	1,437	4,697	12,384	6,171	14,621

Caribou and the DCHS

The information on caribou (text and figure below) is from section 8.1.2 of the phase II FMP text.

8.1.2 Changes to Operational Strategies from Phase I

As part of the Year Three Annual Report (AR), the plan author reports on the determination of the validity of the long-term management direction (LTMD) for the second four-year term.

The LTMD for the Big Pic Forest 2007-2017 FMP was approved prior to the release of *Ontario's Woodland Caribou Conservation Plan* (CCP; MNR, 2009). As illustrated in the CCP, the Big Pic Forest lies within the area of application for the CCP and contains caribou continuous (northern and coastal) and discontinuous distribution zones (refer to Figure 1). Therefore, as part of the Year Three AR, the LTMD was analyzed with regards to caribou habitat. The Year Three Annual Report for the Big Pic Forest was approved, and the LTMD was confirmed as valid with the implementation of a number of operational strategies for phase II. Following is a brief description of caribou habitat management on the Big Pic forest and a summary of operational strategies that will be implemented for phase II planned operations to meet CCP requirements.

The Big Pic Forest 2007-2017 FMP includes a strategy for the management of caribou habitat on the forest, as detailed in Section 3.2.2 of the FMP. The forest was sub-divided into three zones (refer to Figure 2). In the Nagagami Zone, caribou habitat would be managed through deferral of larger areas (approximately 10,000 ha or more) deferred for 40 to 80 years. The Caramat zone would be managed for caribou habitat utilizing larger than normal marten core deferrals, ranging in size from 5,000 to 10,000 ha, and deferred from 20 to 60 years. The Southern zone was not considered current or potential future caribou habitat and was not subject to any special management considerations, but does include marten core deferrals.

Supplemental analysis of the LTMD was conducted to determine if this strategic direction was still valid in consideration of the requirements of the CCP, and to determine any potential operational strategies which could fulfill the requirements of the CCP without significantly altering the strategic direction from the LTMD.

Based upon the results of this analysis, some minor operational changes were made that would be implemented in phase II planned operations of this FMP. A dynamic caribou habitat schedule (DCHS) was developed for the northern portion of the forest which is within the northern continuous distribution zone, as required by the CCP (refer to Figure 3). The strategy for the discontinuous distribution zone is to provide opportunities for connectivity between the northern continuous distribution zone and the coastal



Figure 1. Caribou Distribution Zones from the CCP on the Big Pic Forest.

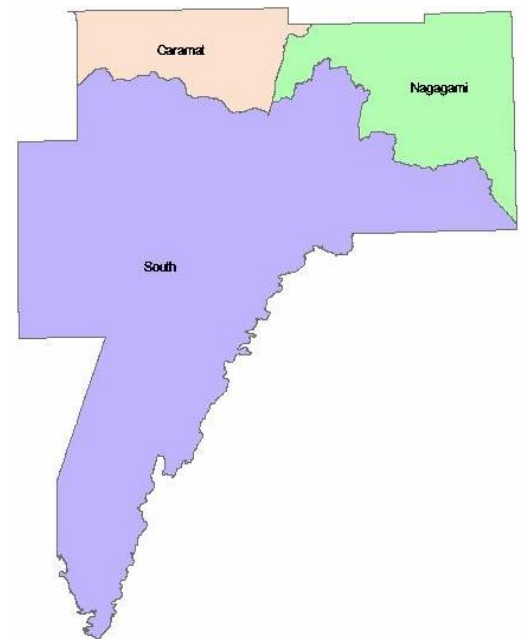


Figure 2. Caribou Zones from the Big Pic Forest 2007-2017 FMP.

continuous distribution zone. This would be primarily achieved through the application of marten core deferrals, reserved forest area (e.g. parks and conservation reserves) and a larger deferral block (subunit DEF), to ensure a sufficient size and arrangement of mature forest patches in this area. The strategy for the coastal continuous distribution zone was to define caribou habitat tracts as best as possible and develop operational harvest blocks and deferral periods. It should be noted that all of these operational blocks and deferral periods were developed in consideration/co-operation with caribou habitat management strategies from FMPs on adjacent forests.

A description of the operational strategy used to plan harvest areas for phase II, with consideration of the DCHS, is provided in Section 8.3.1.1. In addition, phase II planning includes a review of the silvicultural ground rules (SGRs) to ensure sufficient conifer renewal for future caribou habitat (refer to Table FMP-4, formerly Table FMP-5) and development of conditions on regular operations (CROs) based on the SSG (refer to Section 8.2.2.2). Road use management strategies were revised to address road decommissioning/rehabilitation and renewal (refer to Supplementary Documentation 8.9.5). As a result, the following phase I tables were revised: Table FMP-4 (formerly Table FMP-5) and Table FMP-18 (formerly Table FMP-22). The Year Three AR for the Big Pic Forest was approved in October 2011, including these operational strategies to be implemented for phase II planned operations. For a complete discussion of the caribou habitat strategy, included analysis of the long-term management direction, model review, operational strategies (e.g. planned harvest, road construction and decommissioning) please refer to the Year Three Annual Report (2009-2010) for the Big Pic Forest.

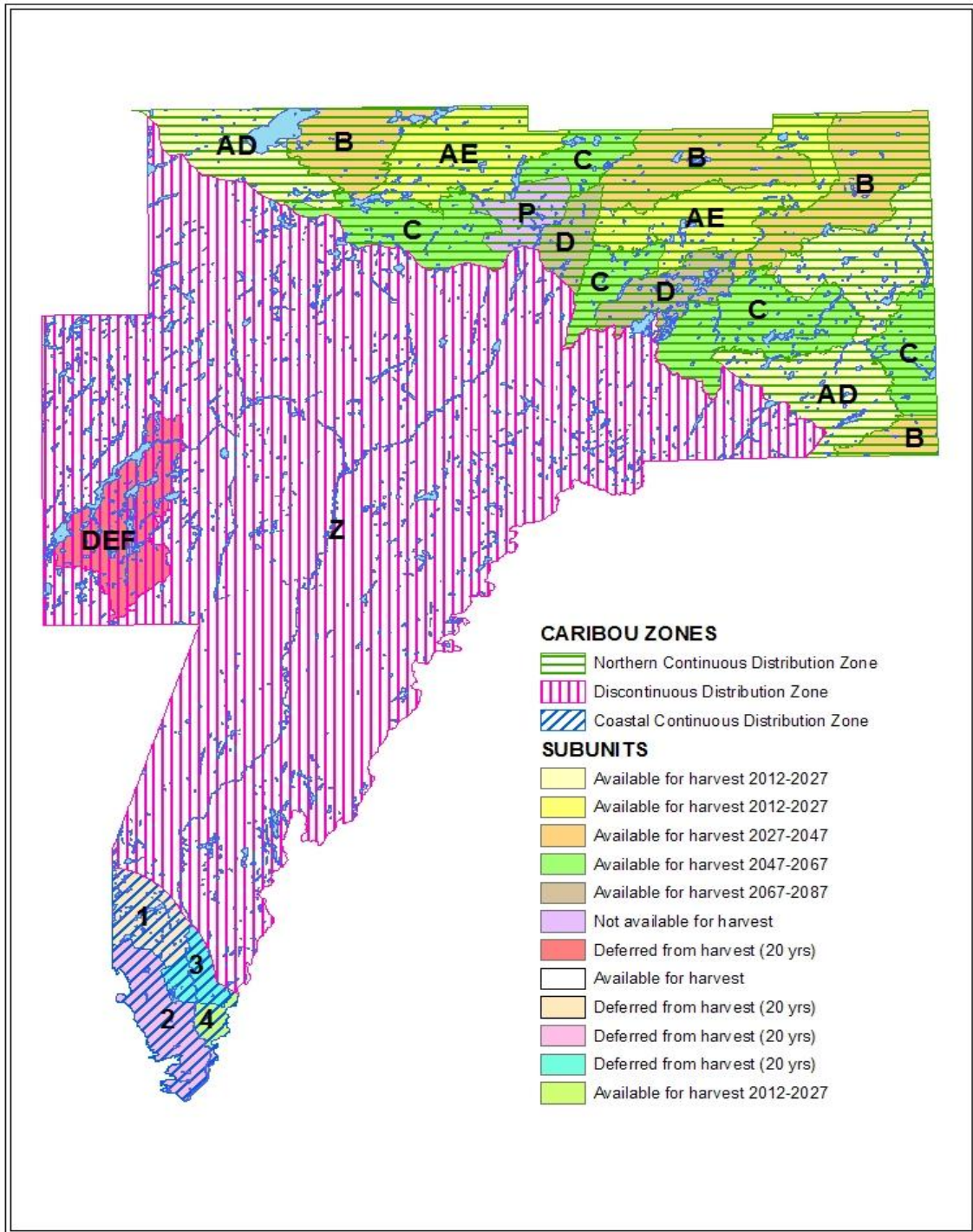


Figure 3. Caribou Management Zones and Associated Subunits on the Big Pic Forest

The information below (DCHS) is from year 3 Annual Report Appendix III

BIG PIC FOREST
2007-2017 FOREST MANAGEMENT PLAN
DYNAMIC CARIBOU HABITAT SCHEDULE (DCHS)

NORTHERN CONTINUOUS BLOCKS	TOTAL AREA (HA)
AE1	18295
AE2	20345
AD1	16679
AD2	34511
B	16608
B	4133
B	20009
B	11805
C	6329
C	6081
C	6914
C	13889
C	19343
D	5760
D	9349
P (PARK)	6517
TOTAL	218567

	2007-2027 20 (0-20)	2027-2047 40 (21-40)	2047-2067 60 (41-60)	2067-2087 80 (61-80)	2087-2107 100 (81-100)	2107-2117 120 (100-120)
ONLINE HABITAT	B and C and P	C and D and P and all AD	D and P and all AD and all AE	AD2, all AE and P	all AE, B and P	B, C, P
HABITAT (HA)	113628	127372	111456	79668	97712	113628
% ONLINE	51.99	58.28	50.99	36.45	44.71	51.99
HARVEST BLOCKS	AE & AD	B	C	AD1 + D	AD2	AE1, AE2
HARVEST AREA (HA)		52555	54556	31788	34511	38640

**split harvest of D blocks (AD and D combined) to 2 20 year periods (i.e. D and E time periods)
therefore the 2AE blocks will cycle as "A" blocks
*AD and AE cleanup occurring in the first 20 years

COASTAL CONTINUOUS BLOCKS	AREA (HA)
1	7627
2	10522
3	4241
4	1979
TOTAL	24369
DEF	18415
Z	395796

SCHEDULE	TOTAL
AD	51190
AE	38640
B	52555
C	54556
D	15109
P	6517
Grand Total	218567

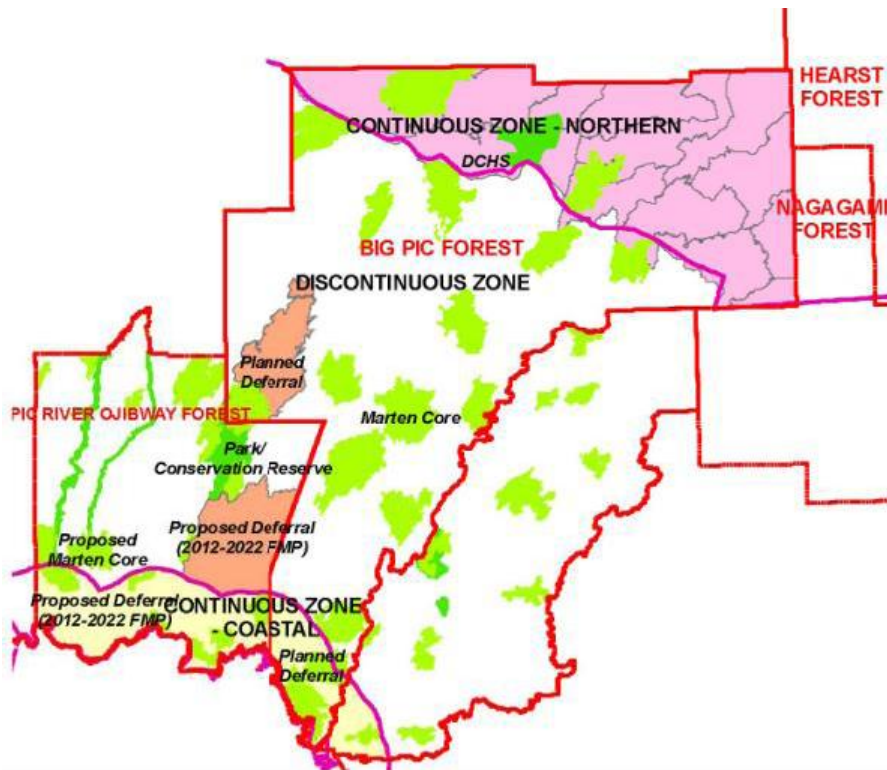


Figure 5a. Planned Landscape Pattern in the Discontinuous Distribution Zone (Pic River Ojibway and Big Pic Forests). (Figure 5a is from year 3 Annual Report text, section 3.6.2)

Caribou Deferral Area Summary

- AE1, AE2, AD1 and AD2 (northern continuous zone) and Block # 4 (Coastal Continues Zone) are open for harvest until 2027.
- B, C and D (northern continuous zone), DEF(discontinuous zone) and block # 1, 2 and 3 are closed for harvest (for 20 years or more)

Northern Continuous Blocks	Total Area (ha)
B	16,608
B	4,133
B	20,009
B	11,805
C	6,329
C	6,081
C	8,914
C	13,889
C	19,343
D	5,760
D	9,349

Coastal Continuous Blocks	Total Area (ha)
1	7,627
2	10,522
3	4,241

Discontinuous Zone	Total Area (ha)
Z	18,415

Grand Total = 163,025

Parks and Conservation Reserves

Table 3. Summary of Parks and Protected Areas within the Big Pic Forest (from 2007 FMP text, section 2.2.5)

Name	Designation	Class	Area (ha)
Craig's Pit*	Provincial Park	Nature Reserve	530
Craig's Pit Addition**†	Provincial Park	Nature Reserve	413
Isko Dewabo Lake Complex	Conservation Reserve	N/A	2967‡
Killala Lake	Conservation Reserve	N/A	13242‡
Lake Superior Shoreline*	Enhanced Management Area	N/A	25647‡
Nagagamisis & Nagagami Lake Addition†	Provincial Park	Natural Environment	32539‡
North Thornben Lake Moraine	Conservation Reserve	N/A	454
Slim Jim Lake	Conservation Reserve	N/A	6460

*Falls within the Great Lakes Heritage Coast Signature Site

‡Includes area outside of the Big Pic FMU boundary

Numbers below are from the MNR approved Base Model for the 2007 FMP (SFMM) (including parks, conservation reserves and enhanced management area)

Parks	Protection Forest	Management reserve (2007-17)	AOC reserve (2007-17)
11589.6	10796.5	13594	48106

Parks: including parks, conservation reserves

Protection Forest: productive forest land on which forest management activities cannot normally be practiced without incurring deleterious environmental effects because of obvious physical limitation such as steep slopes or shallow soils over bedrock.

Management reserve: Bypass (inoperable area as per 1989 inventory) Of the 30,441 hectares tagged as inoperable in 1989, there was agreement that approximately 16,848 hectares would be identified in the inventory as ‘available’ for harvesting activities and 13,593 hectares would be identified as ‘unavailable’

AOC Reserve: The AOC buffers were calculated based on the digital elevations for the forest, calculating the slope adjacent to water (lakes and streams). Slopes less than 15% received a 30 meter buffer, slopes between 15-30% received a 50 meter buffer, slopes between 30-45% received a 70 meter buffer and slopes greater than 45% received a 90 meter buffer. These buffers were summed by forest unit area of the available landbase, and percentage of the overall forest unit was calculated. These percentages were then entered through to the operability age of the specific forest unit

Summary for Core Areas on the Big Pic Forest

Deferral	Area (hectares)
Marten Cores (20yr +)	59,070
Caribou deferral (20yr +)	163,025
Parks and Conservation reserves	11,590
Protection Forest	10,796
Management Reserve (2007-2017 period):	13,594
AOC reserves (2007-2017 period):	48,106